

N.W. 1/4 Sec. 25 Twp. 54 Rge. 23 W2M

N.E. 1/4 Sec. 25 Twp. 54 Rge. 23 W2M

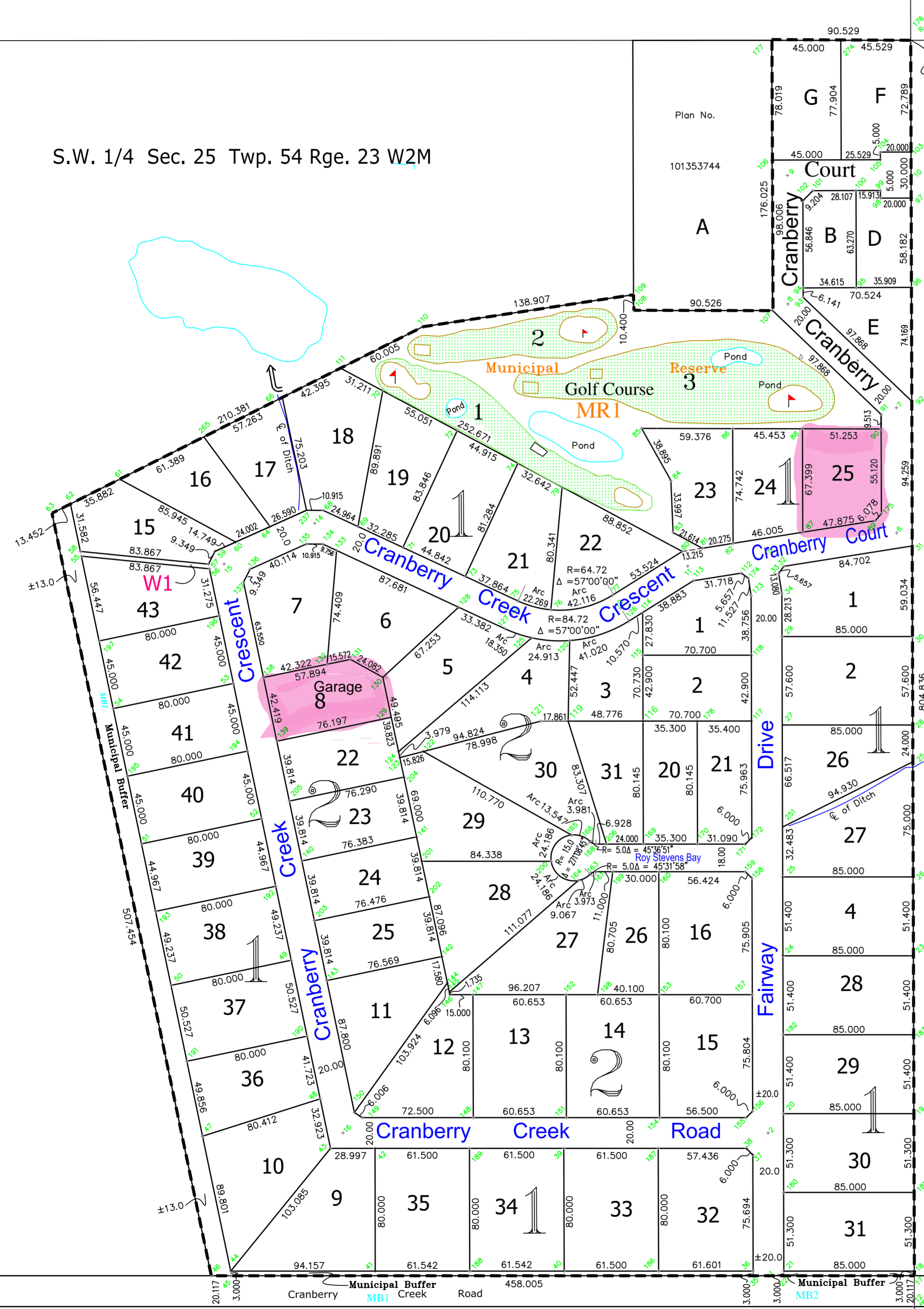
S.W. 1/4 Sec. 25 Twp. 54 Rge. 23 W2M

Centre  
25  
T. 54 R. 23 W2M

Sketch plan showing  
**Surface Subdivision**  
of Part of  
**S.W. 1/4 Sec. 25 Twp. 54 Rge 23 W2Mer.**  
**R.M. of Paddockwood No. 520**  
**Saskatchewan.**

By: **W.C. Soroski S.L.S.**  
July 2009 Scale 1:2000

S.E. 1/4 Sec. 25 Twp. 54 Rge. 23 W2M



AREA OF SUBDIVISION

Total Lot Area	±25.0 ha.	76.6%
MR3 -Municipal Reserve	±2.7 ha.	8.3%
Total area of Road - (In S.W. 1/4 Sec. 25)	±4.1 ha.	12.6%
MB1 & MB2 -Municipal Buffer	±0.77 ha.	2.4%
Walkay Way - 3m	±0.03 ha.	0.1%
TOTAL AREA OF SUBDIVISION	±32.6 ha.	100%

Preliminary only

N.W. 1/4 Sec. 24 Twp. 54 Rge. 23 W2M

24

PLAN PREPARED BY:  
**George, Nicholson, Franko, & Associates Ltd.**  
 Land Surveyors Mappers GIS Consultants  
 Drawn by: VMM  
 July 24, 2009

LAND SURVEYORS SINCE 1910

File No. Cranberry Creek -PS.dwg