

NOTES

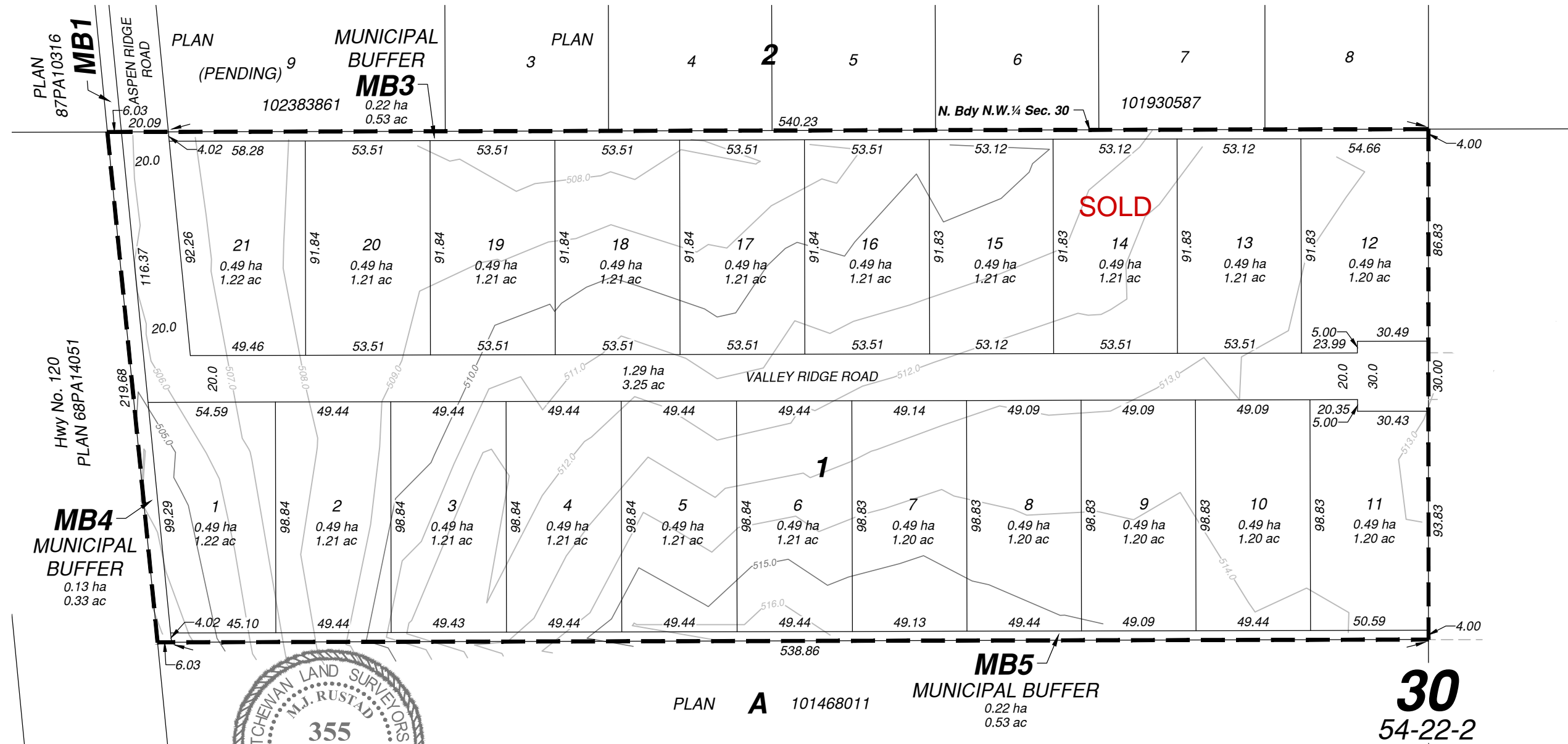
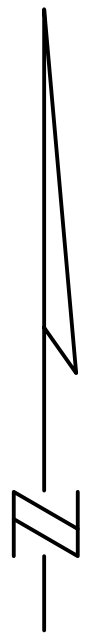
PRELIMINARY DRAWING COMPLETED ON JUNE 14, 2022.
 PORTION TO BE SURVEYED IS OUTLINED IN A HEAVY DASHED LINE, AND CONTAINS
12.15 ha. (30.01 acres).
 MEASUREMENTS ARE IN METRES AND DECIMALS THEREOF.
 DISTANCES ARE APPROXIMATE AND MAY VARY BY ± 5 METRES.
 SOURCE PARCEL NUMBER IS 166069648.
 ORTHOMETRIC ELEVATIONS SHOWN ARE DERIVED FROM PRECISE POINT POSITIONING (PPP).
 TITLE TO THE DEDICATED LANDS SHOWN HEREON IS TO ISSUE TO
 THE: R.M. of PADDOCKWOOD No. 520
 BOX 187
 PADDOCKWOOD, SK
 S0J 1Z0

Planning Authority Approval

PLAN OF PROPOSED SUBDIVISION

OF ALL OF
PARCEL B - PLAN 102065903
N.W.¼ SEC.30-TWP.54-RGE.22-W.2Mer.
R.M. of PADDOCKWOOD No. 520, SK

SCALE 1:2000



Matt J. Rustad
 Saskatchewan Land Surveyor

Revision to previously submitted plan.
 Planning File SUBD-000205-2022.

No.	REVISIONS	DATE	DR.	CH.
1	Added Contours	August 23, 2022	mlk	mjr
2	Added turn around	January 3, 2024	kmh	mjr
FILE: PA221615		DWG.: PA221615DEV.R2		

