

N.W. 1/4 Sec. 25 Twp. 54 Rge. 23 W2M

N.E. 1/4 Sec. 25 Twp. 54 Rge. 23 W2M

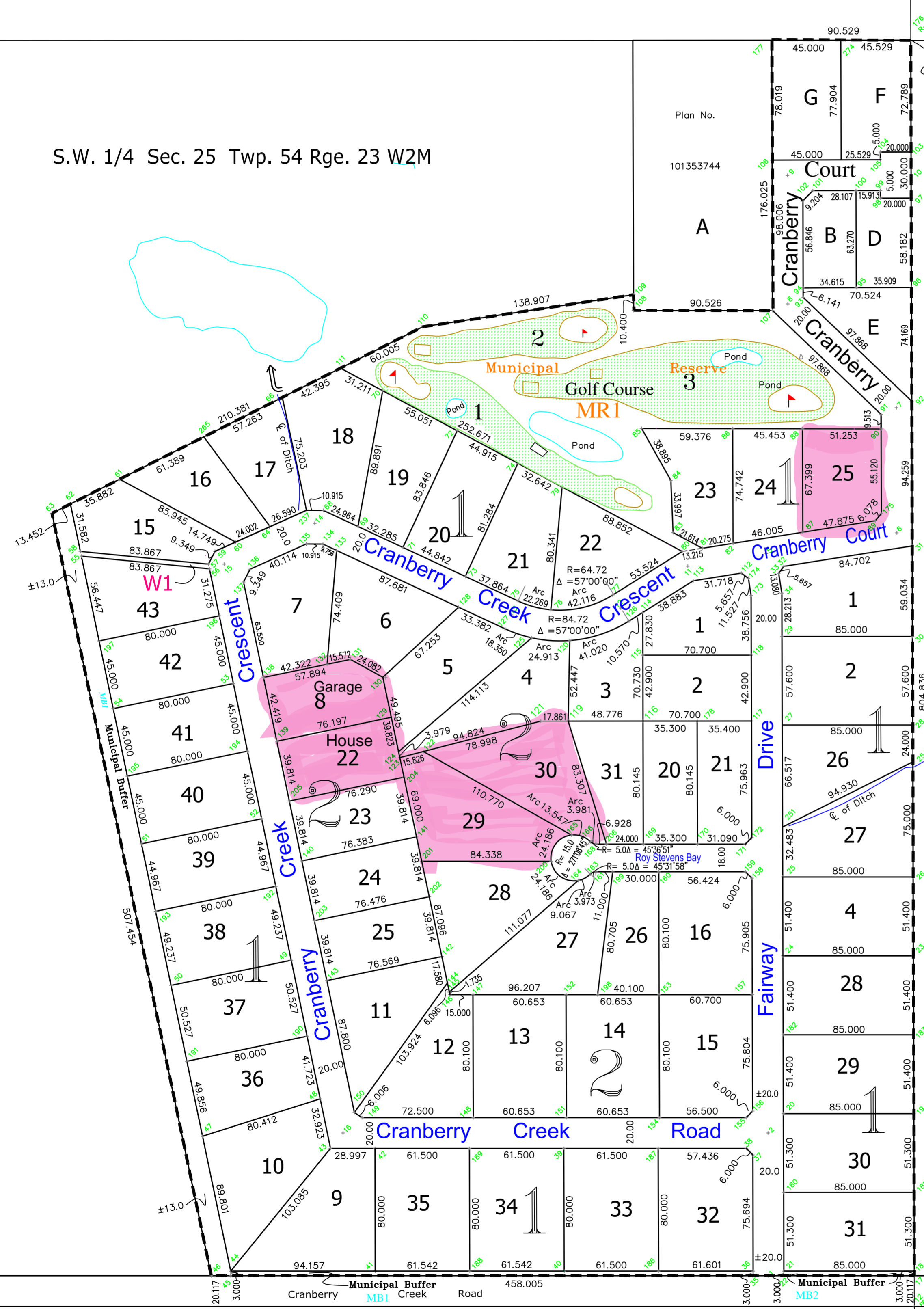
S.W. 1/4 Sec. 25 Twp. 54 Rge. 23 W2M

Centre
25
T. 54 R. 23 W2M

Sketch plan showing
Surface Subdivision
of Part of
S.W. 1/4 Sec. 25 Twp. 54 Rge 23 W2Mer.
R.M. of Paddockwood No. 520
Saskatchewan.

By: **W.C. Soroski S.L.S.**
July 2009 Scale 1:2000

S.E. 1/4 Sec. 25 Twp. 54 Rge. 23 W2M



AREA OF SUBDIVISION

Total Lot Area	±25.0 ha.	76.6%
MR3 -Municipal Reserve	±2.7 ha.	8.3%
Total area of Road - (In S.W. 1/4 Sec. 25)	±4.1 ha.	12.6%
MB1 & MB2 -Municipal Buffer	±0.77 ha.	2.4%
Walkay Way - 3m	±0.03 ha.	0.1%
TOTAL AREA OF SUBDIVISION	±32.6 ha.	100%

Preliminary only

N.W. 1/4 Sec. 24 Twp. 54 Rge. 23 W2M

24

PLAN PREPARED BY:
George, Nicholson, Franko, & Associates Ltd.
 Land Surveyors Mappers GIS Consultants
 Drawn by: VMM
 July 24, 2009
 File No. Cranberry Creek -PS.dwg