

NE 1/4 Sec.36-54-23-2

36  
54-23-2

SE 1/4 Sec.36-54-23-2

RGE. 23

RGE. 22

SW 1/4 Sec.31-54-22-2

NW 1/4 Sec.31-54-22-2

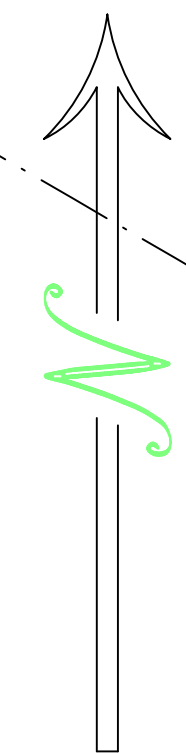
### Aspen Ridge Subdivision Phase 1

PLAN SHOWING PROPOSED SURFACE SUBDIVISION OF SURFACE PARCEL No. 161800084 OF PART OF S.W. 1/4 Sec. 31 Twp. 54, Rge. 22, W.2nd Mer. in R.M. of Paddockwood No. 520 near Resort Village of Candle Lake SASKATCHEWAN

Scale 1 : 2000  
All measurements are in metres and decimals thereof.

Area to be subdivided is outlined in a bold dashed line, and contains ±41.4 ha.

Date of preliminary survey:- September 25th 2006  
Plan revised:- March 20th 2007  
Plan revised:- May 11th 2007



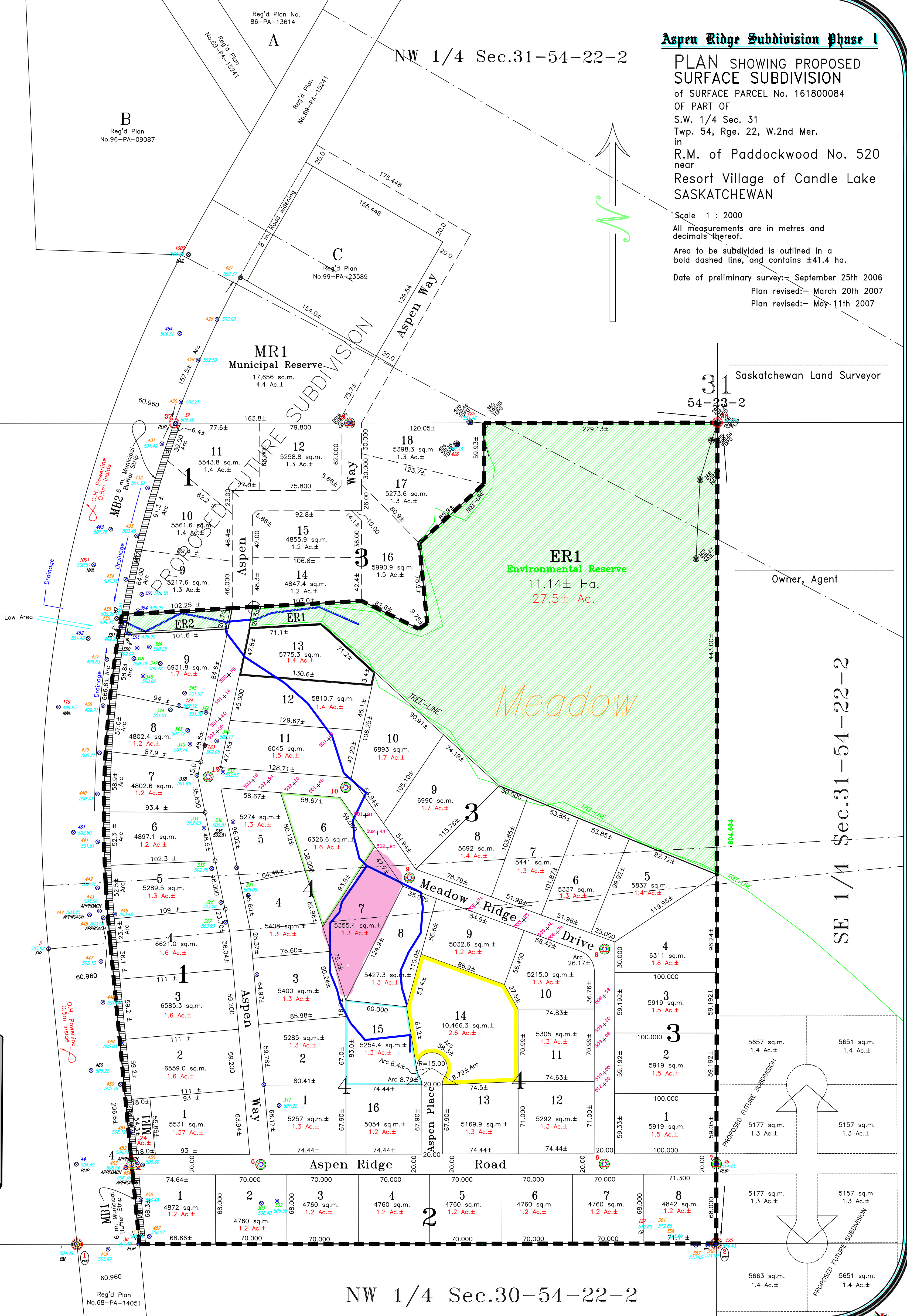
Saskatchewan Land Surveyor

31  
54-23-2

Owner, Agent

SE 1/4 Sec.31-54-22-2

NW 1/4 Sec.30-54-22-2



**George, Nicholson Franko, & Associates Ltd.**  
Land Surveyors • Global Positioning System

Drawn by: Art Mark-May 12th 2007  
File No. 7-aspen.dwg