

**Aspen Ridge Subdivision Phase 1**

**PLAN SHOWING PROPOSED SURFACE SUBDIVISION**  
 of SURFACE PARCEL No. 161800084  
 OF PART OF  
 S.W. 1/4 Sec. 31  
 Twp. 54, Rge. 22, W.2nd Mer.  
 In  
 R.M. of Paddockwood No. 520  
 near  
 Resort Village of Candle Lake  
 SASKATCHEWAN

Scale 1 : 2000  
 All measurements are in metres and decimals thereof.  
 Area to be subdivided is outlined in a bold dashed line, and contains ±41.4 ha.  
 Date of preliminary survey: September 25th 2006  
 Plan revised: March 20th 2007  
 Plan revised: Nov-11th 2007

NE 1/4 Sec.36-54-23-2

NW 1/4 Sec.31-54-22-2

36  
54-23-2

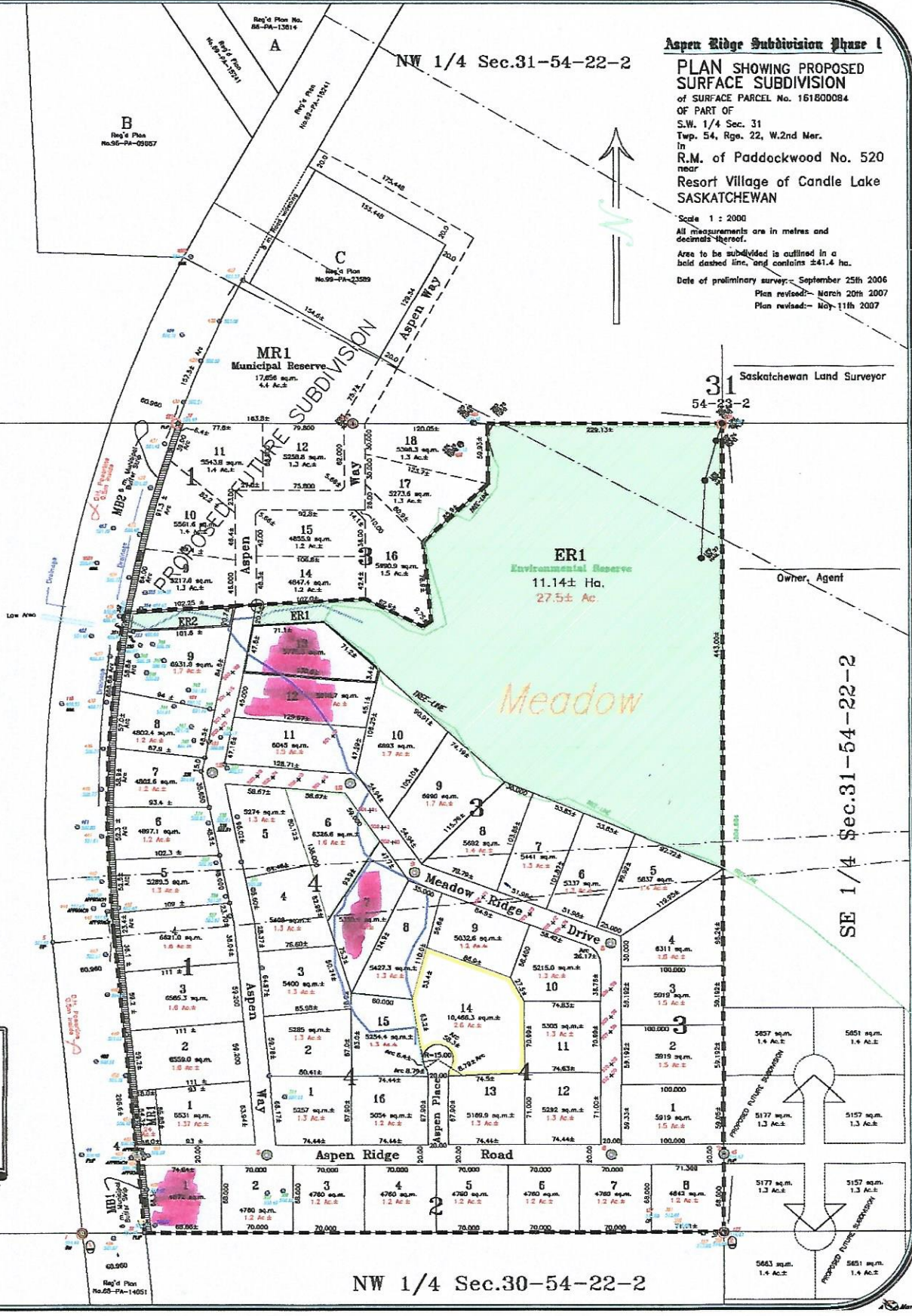
RGE. 23  
RGE. 22

SE 1/4 Sec.36-54-23-2

SW 1/4 Sec.31-54-22-2

SE 1/4 Sec.31-54-22-2

**George, Nicholson Franko, & Associates Ltd.**  
 Land Surveyors - Global Positioning System  
 Drawn by: Art Mark-May 12th 2007  
 File No. 7-aspen.dwg



NW 1/4 Sec.30-54-22-2

Available Lots highlighted in Pink